

Category 5e Solutions



Introduction.....	5.2
Cable.....	5.3
Patch Panels	5.4
Modules	5.5
Patch Cords.....	5.8
MUTOs and Consolidation Points.....	5.13
Outlets.....	5.14



Category 5e Solutions

Introduction

ADC KRONE's TrueNet® Category 5e solutions are capable of carrying up to one Gigabit of data per second over an Ethernet channel, making it the ideal solution for today's small to medium-sized companies.

ADC KRONE's Cat 5e Patch Panels, Wall outlets, Cable and Patch Cords offer a high performance end-to-end channel that maximises data through put.

Offering unrivalled performance and uncompromising quality standards, ADC KRONE delivers the best possible structured cabling products to our customers.

When installed by a certified TrueNet® Integrator, this solution is guaranteed to exceed Class D channel specifications as set down in International Standards.

Category 5e Solutions

Cable

4-pair Cable

TrueNet® 4-pair Category 5e copper cables lay the solid platform needed for a reliable 10/100 Megabit or 1 Gigabit Ethernet network.



Ordering Information

Description	Quantity	Colour	Product No.
4-pair UTP Cable, Category 5e	305m Box	Grey	6499 1 028-01
4-pair UTP Cable, Category 5e	305m Box	Blue	6499 1 028-02
4-pair FTP Cable, Category 5e	305m Box	Grey	6499 1 023-03

Category 5e Solutions

Patch Panels

Fascia Patch Panels

These patch panels are available in 24 and 48 port versions. Performance exceeds specifications according to ISO/IEC 11801:2002, EN 50173-1:2002 and TIA/EIA 568-B. Comes supplied with rear wire manager as standard



24-port Patch Panel

Ordering Information

Description	Quantity	Product No.
Category 5e Fascia Patch Panel 24 Port 1U	Box of 1	6653 1 587-24
Category 5e Fascia Patch Panel 24 Port 2U	Box of 1	6653 1 587-48

Modular KM8 Patch Panels

These high density modular patch panels are available in 16, 24 and 32 port versions. They can receive both tool less as well as modular punch down KM8 jacks. Performance exceeds Exceeds specifications according to ISO/IEC 11801:2002, EN 50173-1:2002 and TIA/EIA 568-B



16-port Shielded Patch Panel

Ordering Information

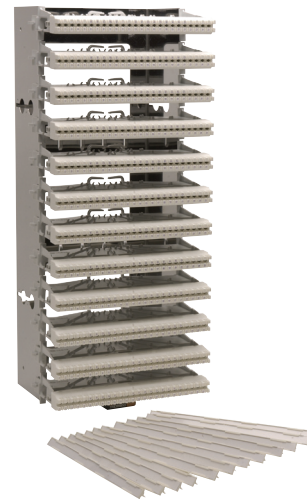
Description	Product No.
Patch Panel, Category 5e 16 Port Shielded	6690 1 412-16
Patch Panel, Category 5e 24 Port Shielded	6690 1 412-24
Patch Panel, Category 5e 32 Port Shielded	6690 1 412-32
Patch Panel, Unloaded KM8 16 Port	7022 2 150-16
Patch Panel, Unloaded KM8 24 Port	7022 2 150-24
Patch Panel, Unloaded KM8 32 Port	7022 2 150-32

Category 5e Solutions

Modules

HighBand® 25 300-pair Broadband Kit

Ideal as a high density Category 5e wall mount cross-connect solution. Consists of (1) Backmount frame, (12) 25-pair Broadband Category 5e modules and (12) label holders.



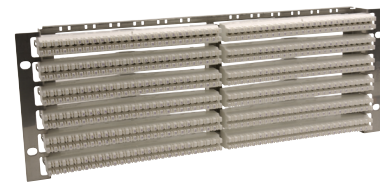
HighBand® 25 300-pair Broadband Kit

Ordering Information

Description	Quantity	Product No.
HighBand® 25 300-pair Broadband Kit	Kit	6450 1 101-01

HighBand® 25 19" 300-pair Broadband Kit

Used in 19" rack mount installations. Consists of (12) Broadband Category 5e modules, (12) label holder kits and (1) 4RU 19" recessed frame.



HighBand® 25 19" 300-pair Broadband Kit

Ordering Information

Description	Quantity	Product No.
HighBand® 25 19" 300-pair Broadband Kit	Kit	6450 1 180-00

Category 5e Solutions Modules

HighBand® 10 Disconnect Module

Category 5e Disconnect Module for termination of 10 incoming and 10 outgoing pairs. Pairs numbered 1-10. Ideal for use in backbone cabling where high density and disconnect features are required. Can be used in a Patch-by-Exception solution. For mounting on both Profil® and Backmount frames.



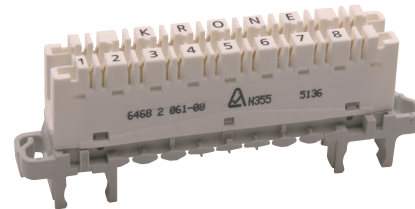
HighBand® 10 Disconnect Module

Ordering Information

Description	Quantity	Colour	Product No.
HighBand® 10 Disconnect Module	Box of 10	White	6468 5 061-00

HighBand® Compact 8 Disconnect Module

Compact Category 5e Module for termination of 2, 4-pair cables. Pairs numbered 1-8. For mounting on Profil or Backmount frames specially designed for an 8-pair footprint only.



HighBand® Compact 8 Disconnect Module

Ordering Information

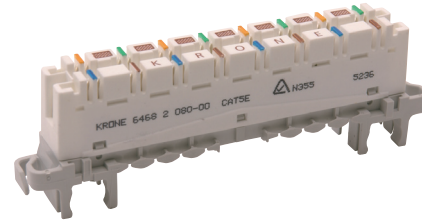
Description	Quantity	Colour	Product No.
HighBand® Compact 8 Disconnect Module	Box of 10	White	6468 5 061-08

Category 5e Solutions

Modules

HighBand® 16 Switching Module

Category 5e Switching Module for termination of 4 incoming 4-pair cables and 4 outgoing 4-pair cables. Colour coded for ease of termination. Ideal for use in horizontal cabling where high density is required. Cannot be used in a Patch-by-Exception solution. For mounting on both Profil® and Backmount frames.



HighBand® 16 Switching Module

Ordering Information

Description	Quantity	Colour	Product No.
HighBand® 16 Switching Module	Box of 10	White	6468 5 080-00

HighBand® 20 Switching Module

Category 5e Switching Module for termination of 20 incoming and 20 outgoing pairs. Ideal for use in backbone cabling where high density is required. Cannot be used in a Patch-by-Exception solution. For mounting on both Profil and Backmount frames.



HighBand® 20 Switching Module

Ordering Information

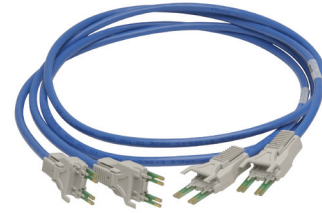
Description	Quantity	Colour	Product No.
HighBand® 20 Switching Module	Box of 10	White	6468 5 081-00

Category 5e Solutions

Patch Cords

HighBand® 16 Patch Cord, 4-pair

Used for patching 4 pairs between HighBand® 16 modules.



HighBand® 16 Patch Cord, 4-pair
(2 Patch Cords shown)

Ordering Information

Description	Quantity	Length	Colour	Product No.
HighBand® 16 Patch Cord, 4-pair	Bag of 2	1.0m	Blue	6451 2 050-11
HighBand® 16 Patch Cord, 4-pair	Bag of 2	2.0m	Blue	6451 2 050-21
HighBand® 16 Patch Cord, 4-pair	Bag of 2	3.0m	Blue	6451 2 050-31
HighBand® 16 Patch Cord, 4-pair	Bag of 2	5.0m	Blue	6451 2 050-51

HighBand® 16 Patch Cord, 4-pair to RJ45

Used for patching 4 pairs on a HighBand® 16 module to an RJ45 outlet.



HighBand® Patch Cord, 4-pair to RJ45
(2 Patch Cords shown)

Ordering Information

Description	Quantity	Length	Colour	Product No.
HighBand® 16 Patch Cord, 4-pair to RJ45	Bag of 2	1.0m	Blue	6451 2 057-11
HighBand® 16 Patch Cord, 4-pair to RJ45	Bag of 2	2.0m	Blue	6451 2 057-21
HighBand® 16 Patch Cord, 4-pair to RJ45	Bag of 2	3.0m	Blue	6451 2 057-31
HighBand® 16 Patch Cord, 4-pair to RJ45	Bag of 2	5.0m	Blue	6451 2 057-51

Category 5e Solutions

Patch Cords

HighBand® 10 Patch Cord, 4-pair to 4-pair

Used to patch 4 pairs on HighBand® 10 modules only. Can be used in a Patch-by-Exception solution to break the original circuit and patch the signal to a new location.



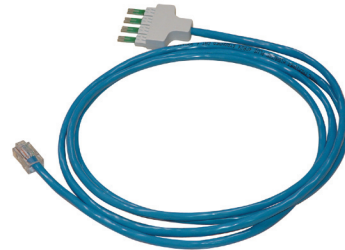
HighBand® 10 Patch Cord, 4-pair
(2 Patch Cords shown)

Ordering Information

Description	Quantity	Length	Colour	Product No.
HighBand® 10 Patch Cord, 4-pair	Bag of 2	1.0m	Blue	6451 2 101-10
HighBand® 10 Patch Cord, 4-pair	Bag of 2	2.0m	Blue	6451 2 101-20
HighBand® 10 Patch Cord, 4-pair	Bag of 2	3.0m	Blue	6451 2 101-30

HighBand® 10 Patch Cord, 4-pair to RJ45

Used to patch 4 pairs on a HighBand® 10 module to an RJ45 outlet.



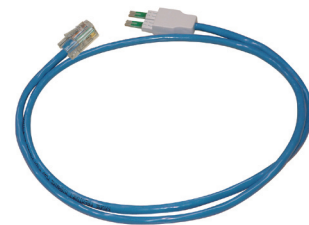
HighBand® 10 Patch Cord, 4-pair to RJ45

Ordering Information

Description	Quantity	Length	Colour	Product No.
HighBand® 10 Patch Cord, 4-pair to RJ45	Bag of 2	1.0m	Blue	6451 2 102-10
HighBand® 10 Patch Cord, 4-pair to RJ45	Bag of 2	2.0m	Blue	6451 2 102-20
HighBand® 10 Patch Cord, 4-pair to RJ45	Bag of 2	3.0m	Blue	6451 2 102-30

HighBand® 10 Patch Cord, 2-pair to RJ45

Used for 2-pair patching on a HighBand® 10 module to an RJ45 outlet.



HighBand® 10 Patch Cord, 2-pair to RJ45

Ordering Information

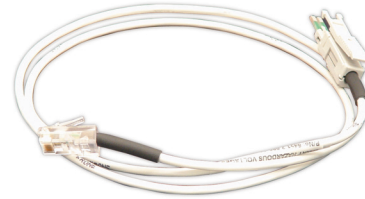
Description	Quantity	Length	Colour	Product No.
HighBand® 10 Patch Cord, 2-pair to RJ45	Bag of 2	1.0m	Blue	6451 2 104-10
HighBand® 10 Patch Cord, 2-pair to RJ45	Bag of 2	2.0m	Blue	6451 2 104-20
HighBand® 10 Patch Cord, 2-pair to RJ45	Bag of 2	3.0m	Blue	6451 2 104-30

Category 5e Solutions

Patch Cords

HighBand® Patch Cord, 1 or 2-pair to RJ45

Used for patching between HighBand® modules and equipment with an RJ45 interface. Provides 1-pair patching on HighBand® 10 and 2-pair patching on HighBand® 16 and 20.



HighBand® Patch Cord, 1/2-pair to RJ45

Ordering Information

Description	Quantity	Length	Colour	Product No.
HighBand® Patch Cord, 1/2-pair to RJ45	Bag of 2	1.0m	White	6451 2 080-11
HighBand® Patch Cord, 1/2-pair to RJ45	Bag of 2	2.0m	White	6451 2 080-21

HighBand® 10 Test Cord, 4-pair to RJ45

Used for 4-pair testing on HighBand® 10 modules. RJ45 end allows connection to test equipment.



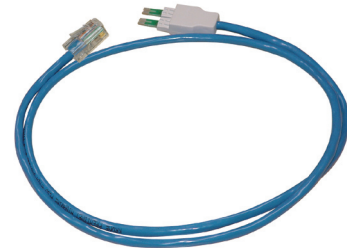
HighBand® 10 Test Cord, 4-pair to RJ45

Ordering Information

Description	Quantity	Length	Colour	Product No.
HighBand® 10 Test Cord, 4-pair to RJ45	Bag of 1	3.0m	Blue	6451 2 099-30

HighBand® 10 Test Cord, 2-pair to RJ45

Used for 2-pair testing on HighBand® 10 modules. RJ45 end allows connection to test equipment.



HighBand® 10 Test Cord, 2-pair to RJ45

Ordering Information

Description	Quantity	Length	Colour	Product No.
HighBand® 10 Test Cord, 2-pair to RJ45	Bag of 1	3.0m	Blue	6451 2 100-30

Category 5e Solutions

Patch Cords

Category 5e Patch Cord, RJ45 to RJ45

For patching between two RJ45 outlets in a Category 5e network.



Category 5e Patch Cord, RJ45 to RJ45

Ordering Information

Description	Quantity	Length	Colour	Product No.
TrueNet® Category 5e Patch Cord-Moulded Boot	Bag of 2	1.0m	Blue	6451 5 039-10B
TrueNet® Category 5e Patch Cord-Moulded Boot	Bag of 2	2.0m	Blue	6451 5 039-20B
TrueNet® Category 5e Patch Cord-Moulded Boot	Bag of 2	3.0m	Blue	6451 5 039-30B
TrueNet® Category 5e Patch Cord-Moulded Boot	Bag of 2	4.0m	Blue	6451 5 039-40B
TrueNet® Category 5e Patch Cord-Moulded Boot	Bag of 2	5.0m	Blue	6451 5 039-50B
TrueNet® Category 5e Patch Cord-Moulded Boot	Bag of 2	7.0m	Blue	6451 5 039-70B
TrueNet® Category 5e Patch Cord-Moulded Boot	Bag of 2	10.0m	Blue	6451 5 039-00B
TrueNet® Category 5e Patch Cord-Moulded Boot	Bag of 2	15.0m	Blue	6451 5 039-01B
TrueNet® Category 5e Patch Cord-Moulded Boot	Bag of 2	1.0m	Green	6451 5 092-10B
TrueNet® Category 5e Patch Cord-Moulded Boot	Bag of 2	2.0m	Green	6451 5 092-20B
TrueNet® Category 5e Patch Cord-Moulded Boot	Bag of 2	3.0m	Green	6451 5 092-30B
TrueNet® Category 5e Patch Cord-Moulded Boot	Bag of 2	4.0m	Green	6451 5 092-40B
TrueNet® Category 5e Patch Cord-Moulded Boot	Bag of 2	5.0m	Green	6451 5 092-50B
TrueNet® Category 5e Patch Cord-Moulded Boot	Bag of 2	7.0m	Green	6451 5 092-70B
TrueNet® Category 5e Patch Cord-Moulded Boot	Bag of 2	10.0m	Green	6451 5 092-00B
TrueNet® Category 5e Patch Cord-Moulded Boot	Bag of 2	15.0m	Green	6451 5 092-01B
TrueNet® Category 5e Patch Cord-Moulded Boot	Bag of 2	1.0m	Red	6451 5 090-10B
TrueNet® Category 5e Patch Cord-Moulded Boot	Bag of 2	2.0m	Red	6451 5 090-20B
TrueNet® Category 5e Patch Cord-Moulded Boot	Bag of 2	3.0m	Red	6451 5 090-30B
TrueNet® Category 5e Patch Cord-Moulded Boot	Bag of 2	4.0m	Red	6451 5 090-40B
TrueNet® Category 5e Patch Cord-Moulded Boot	Bag of 2	5.0m	Red	6451 5 090-50B
TrueNet® Category 5e Patch Cord-Moulded Boot	Bag of 2	7.0m	Red	6451 5 090-70B
TrueNet® Category 5e Patch Cord-Moulded Boot	Bag of 2	10.0m	Red	6451 5 090-00B
TrueNet® Category 5e Patch Cord-Moulded Boot	Bag of 2	15.0m	Red	6451 5 090-01B

(Cont'd next page)

Category 5e Solutions

Patch Cords

Category 5e Patch Cord RJ45 to RJ45

Ordering Information

Description	Quantity	Length	Colour	Product No.
TrueNet® Category 5e Patch Cord-Moulded Boot	Bag of 2	1.0m	Yellow	6451 5 093-10B
TrueNet® Category 5e Patch Cord-Moulded Boot	Bag of 2	2.0m	Yellow	6451 5 093-20B
TrueNet® Category 5e Patch Cord-Moulded Boot	Bag of 2	3.0m	Yellow	6451 5 093-30B
TrueNet® Category 5e Patch Cord-Moulded Boot	Bag of 2	4.0m	Yellow	6451 5 093-40B
TrueNet® Category 5e Patch Cord-Moulded Boot	Bag of 2	5.0m	Yellow	6451 5 093-50B
TrueNet® Category 5e Patch Cord-Moulded Boot	Bag of 2	7.0m	Yellow	6451 5 093-70B
TrueNet® Category 5e Patch Cord-Moulded Boot	Bag of 2	10.0m	Yellow	6451 5 093-00B
TrueNet® Category 5e Patch Cord-Moulded Boot	Bag of 2	15.0m	Yellow	6451 5 093-01B
TrueNet® Category 5e Patch Cord-Moulded Boot	Bag of 2	1.0m	Orange	6451 5 097-10B
TrueNet® Category 5e Patch Cord-Moulded Boot	Bag of 2	2.0m	Orange	6451 5 097-20B
TrueNet® Category 5e Patch Cord-Moulded Boot	Bag of 2	3.0m	Orange	6451 5 097-30B
TrueNet® Category 5e Patch Cord-Moulded Boot	Bag of 2	4.0m	Orange	6451 5 097-40B
TrueNet® Category 5e Patch Cord-Moulded Boot	Bag of 2	5.0m	Orange	6451 5 097-50B
TrueNet® Category 5e Patch Cord-Moulded Boot	Bag of 2	7.0m	Orange	6451 5 097-70B
TrueNet® Category 5e Patch Cord-Moulded Boot	Bag of 2	10.0m	Orange	6451 5 097-00B
TrueNet® Category 5e Patch Cord-Moulded Boot	Bag of 2	15.0m	Orange	6451 5 097-01B
TrueNet® Category 5e Patch Cord-Moulded Boot	Bag of 2	1.0m	White	6451 5 098-10B
TrueNet® Category 5e Patch Cord-Moulded Boot	Bag of 2	2.0m	White	6451 5 098-20B
TrueNet® Category 5e Patch Cord-Moulded Boot	Bag of 2	3.0m	White	6451 5 098-30B
TrueNet® Category 5e Patch Cord-Moulded Boot	Bag of 2	4.0m	White	6451 5 098-40B
TrueNet® Category 5e Patch Cord-Moulded Boot	Bag of 2	5.0m	White	6451 5 098-50B
TrueNet® Category 5e Patch Cord-Moulded Boot	Bag of 2	7.0m	White	6451 5 098-70B
TrueNet® Category 5e Patch Cord-Moulded Boot	Bag of 2	10.0m	White	6451 5 098-00B
TrueNet® Category 5e Patch Cord-Moulded Boot	Bag of 2	15.0m	White	6451 5 098-01B
TrueNet® Category 5e Patch Cord-Moulded Boot	Bag of 2	1.0m	Grey	6451 5 094-10B
TrueNet® Category 5e Patch Cord-Moulded Boot	Bag of 2	2.0m	Grey	6451 5 094-20B
TrueNet® Category 5e Patch Cord-Moulded Boot	Bag of 2	3.0m	Grey	6451 5 094-30B
TrueNet® Category 5e Patch Cord-Moulded Boot	Bag of 2	4.0m	Grey	6451 5 094-40B
TrueNet® Category 5e Patch Cord-Moulded Boot	Bag of 2	5.0m	Grey	6451 5 094-50B
TrueNet® Category 5e Patch Cord-Moulded Boot	Bag of 2	7.0m	Grey	6451 5 094-70B
TrueNet® Category 5e Patch Cord-Moulded Boot	Bag of 2	10.0m	Grey	6451 5 094-00B
TrueNet® Category 5e Patch Cord-Moulded Boot	Bag of 2	15.0m	Grey	6451 5 094-01B

Category 5e Solutions

MUTOs and Consolidation Points

12-port MUTO Kit

MUTO stands for Multi User Telecommunication Outlet. It is used as a point of administration and distribution for data and voice patch leads. Kit comprises of 12 Category 5e Keystone outlets, a 12-port faceplate and mounting box. Box contains knock outs for entry of cable from any side or from rear.



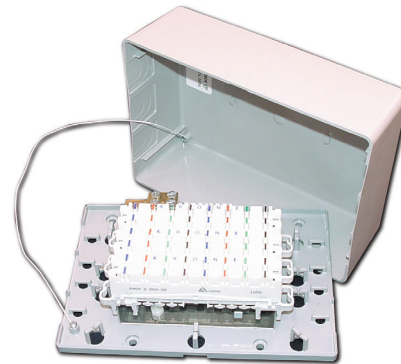
12-port MUTO Kit

Ordering Information

Description	Quantity	Colour	Product No.
12-port Kit	Bag of 1	White	6455 1 058-00

Consolidation Box

Used in horizontal cabling as a consolidation point for a network. 24-pair Consolidation Box – contains 3 HighBand® 8 disconnection modules. 48-pair Consolidation Box – contains 3 HighBand® 16 switching modules.



24-pair Consolidation Box

Ordering Information

Description	Quantity	Colour	Product No.
24-pair Consolidation Box	Box of 1	Grey	6455 1 051-00
48-pair Consolidation Box	Box of 1	Grey	6455 1 057-00

Category 5e Solutions

Outlets

FMK RJ45 Flush Mount Outlets

Used for flush mount applications. Clips directly into Clipsal and HPM style faceplates. Category 5e performance. Wiring code label provides both 568A and 568B wiring formats.



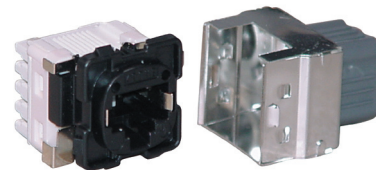
FMK RJ45 Outlet

Ordering Information

Description	Quantity	Colour	Product No.
RJ45 Outlet	Bag of 10	White	6467 4 072-00
RJ45 Outlet	Bag of 10	Black	6467 4 072-10
RJ45 Outlet	Bag of 10	Grey	6467 4 072-20
RJ45 Outlet	Bag of 10	Ivory	6467 4 072-30
RJ45 Outlet	Bag of 10	Blue	6467 4 072-40
RJ45 Outlet	Bag of 10	Red	6467 4 072-50

FMK Shielded RJ45 Flush Mount Outlet

Used for flush mount applications. Clips directly into Clipsal and HPM style faceplates. Category 5e performance. Supplied with 360 degree outer metal shielding. Wiring code label provides both 568A and 568B wiring formats.



FMK Shielded RJ45 Outlet

Ordering Information

Description	Quantity	Colour	Product No.
Shielded RJ45 Outlet	Box of 10	White	6467 4 074-00
Shielded RJ45 Outlet	Box of 10	Black	6467 4 074-10
Shielded RJ45 Outlet	Box of 10	Grey	6467 4 074-20
Shielded RJ45 Outlet	Box of 10	Blue	6467 4 074-40
Shielded RJ45 Outlet	Box of 10	Red	6467 4 074-50

SMK2 Surface Mount Outlet

Designed to mount onto surfaces where the wall cavity is not accessible. Category 5e performance. Provides 2, RJ45 Category 5e connectors. The lid of the SMK includes a dual labelling facility.



Surface Mount Outlet, SMK2

Ordering Information

Description	Quantity	Colour	Product No.
Surface Mount Outlet, SMK2	Bag of 1	Grey	6467 1 084-00
Surface Mount Outlet, SMK2	Bag of 1	Ivory	6467 1 084-10
Surface Mount Outlet, SMK2	Bag of 1	White	6467 1 084-20

Category 5e Solutions

Outlets

SMK2 Shielded Surface Mount Outlet

Designed to mount on to surfaces where the wall cavity is not accessible. Category 5e performance. Provides 2, Shielded RJ45 Category 5e connectors. The lid of the SMK includes a dual labelling facility.



Shielded Surface Mount Outlet, SMK2

Ordering Information			
Description	Quantity	Colour	Product No.
Shielded Surface Mount Outlet	Bag of 1	Grey	6467 1 085-00
Shielded Surface Mount Outlet	Bag of 1	Ivory	6467 1 085-10
Shielded Surface Mount Outlet	Bag of 1	White	6467 1 085-20

SMK1 Surface Mount Outlet

Designed to mount on to surfaces where the wall cavity is not accessible. Category 5e performance. Provides 1 RJ45 Category 5e connector. The lid of the SMK includes a labelling facility.



Surface Mount Outlet, SMK1

Ordering Information			
Description	Quantity	Colour	Product No.
Surface Mount Outlet, SMK1	Bag of 1	Grey	6467 1 075-00
Surface Mount Outlet, SMK1	Bag of 1	Ivory	6467 1 075-10
Surface Mount Outlet, SMK1	Bag of 1	White	6467 1 075-20

SMK1 Shielded Surface Mount Outlet

Designed to mount onto surfaces where the wall cavity is not accessible. Category 5e performance. Provides 1, Shielded RJ45 Category 5e connector. The lid of the SMK includes a labelling facility.



Shielded Surface Mount Outlet, SMK1

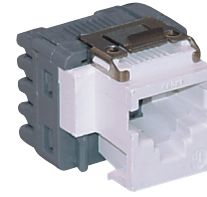
Ordering Information			
Description	Quantity	Colour	Product No.
Shielded Surface Mount Outlet, SMK1	Bag of 1	Grey	6467 1 076-00
Shielded Surface Mount Outlet, SMK1	Bag of 1	Ivory	6467 1 076-10
Shielded Surface Mount Outlet, SMK1	Bag of 1	White	6467 1 076-20

Category 5e Solutions

Outlets

Keystone Inline RJ45 Outlet

Keystone clipping allows mounting into Keystone patch panels and Keystone style faceplates. Category 5e RJ45 outlets. Wiring code label provides both 568A and 568B wiring formats.



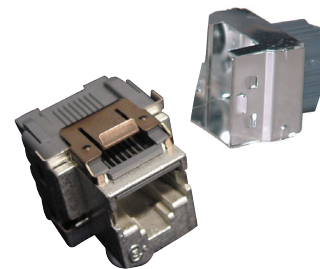
Keystone Inline RJ45 Outlet

Ordering Information

Description	Quantity	Colour	Product No.
Keystone Inline RJ45 Outlet	Bag of 1	White	6540 1 100-00
Keystone Inline RJ45 Outlet	Bag of 1	Black	6540 1 100-02
Keystone Inline RJ45 Outlet	Bag of 1	Ivory	6540 1 100-04
Keystone Inline RJ45 Outlet	Bag of 1	Red	6540 1 100-08
Keystone Inline RJ45 Outlet	Bag of 1	Blue	6540 1 100-10
Keystone Inline RJ45 Outlet	Bag of 1	Grey	6540 1 100-20
Keystone Inline RJ45 Outlet	Bag of 8	White	6540 5 110-00
Keystone Inline RJ45 Outlet	Bag of 8	Black	6540 5 110-01
Keystone Inline RJ45 Outlet	Bag of 8	Ivory	6540 5 110-02
Keystone Inline RJ45 Outlet	Bag of 8	Red	6540 5 110-04
Keystone Inline RJ45 Outlet	Bag of 8	Blue	6540 5 110-05
Keystone Inline RJ45 Outlet	Bag of 8	Grey	6540 5 110-10

Keystone Inline Shielded Outlet

Keystone clipping allows mounting into Keystone Patch Panels and Keystone style faceplates. Category 5e RJ45 outlet. Both nosepiece and IDC areas are shielded. Nosepiece is made of diecast metal to provide extra shielding. Wiring code label provides both 568A and 568B wiring formats.



Keystone Inline Shielded Outlet

Ordering Information

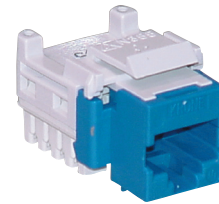
Description	Quantity	Colour	Product No.
Keystone Inline Shielded Outlet	Bag of 1	Metal	6540 1 154-02
Keystone Inline Shielded Outlet	Bag of 8	Metal	6540 5 161-00

Category 5e Solutions

Outlets

Keystone Right Angle RJ45 Outlet K610 type

For mounting into Keystone surface mount boxes and Keystone faceplates. Category 5e RJ45 outlet. IDCs are at a right angle to contacts. Wiring code label provides both 568A and 568B wiring formats.



Keystone Right Angle RJ45 Outlet

Ordering Information

Description	Quantity	Colour	Product No.
Keystone Right Angle RJ45 Outlet	Bag of 10	Grey	6467 5 181-00
Keystone Right Angle RJ45 Outlet	Bag of 10	Ivory	6467 5 181-10
Keystone Right Angle RJ45 Outlet	Bag of 10	White	6467 5 181-20
Keystone Right Angle RJ45 Outlet	Bag of 10	Black	6467 5 181-30
Keystone Right Angle RJ45 Outlet	Bag of 10	Blue	6467 5 181-40
Keystone Right Angle RJ45 Outlet	Bag of 10	Red	6467 5 181-50
Keystone Right Angle RJ45 Outlet	Bag of 10	Orange	6467 5 181-60
Keystone Right Angle RJ45 Outlet	Bag of 10	Purple	6467 5 181-70
Keystone Right Angle RJ45 Outlet	Bag of 10	Green	6467 5 181-80
Keystone Right Angle RJ45 Outlet	Bag of 10	Yellow	6467 5 181-90



TrueNet® Structured Cabling

09/08 • 4008361N